



Yinglong Superhard Materials Manufactory
Add: No.77, Westgate, Lintong Dist., Xi'an, China [Http://www.grinding-wheel.cn](http://www.grinding-wheel.cn)
Tel: +86-29-88490308/83851636/83855677 Fax: +86-29-88490308 83852230
Email: info@cnherohome.com info@grinding-wheel.cn



YINGLONG SUPERHARD MATERIALS MANUFACTORY



西安市临潼区英隆超硬材料厂 中国·西安市临潼区西关 77 号
电话: +86-29-88490308/83851636/83855677 传真: +86-29-88490308/83852230 邮编: 710600



Yinglong(Herohome) Superhard Materials Manufactory

Located in the Westgate of Lintong Dist., Xi'an, our corporation, Yinglong(Herohome) Superhard Materials Manufactory is one of the most important manufacturers of Synthetic Diamond and Cubic Boron Nitride (CBN) Grinding-wheels in the China.

With the world famous terra-cotta museum beside it, Yinglong(Herohome) is a professional corporation with over 30 years of experience in manufacturing, sales and the R&D of new technologies. Our main products include two series of CBN & Diamond Grinding-wheels with dozens of types and more than two thousand patterns.

Having very high hardness and excellent wear resistance, the abrasive materials Diamond and Cubic Boron Nitride (CBN) have many applications in the processing of hard brittle materials for instance sintered-carbide tooling, patterns, pottery, glass, stone and semiconductors as well as many others. These abrasives are long lasting at extremely high speeds and have a significant cost-saving impact on the processing of ordinary steel materials. Such abrasives maintain accurate profiles for extended periods of use which is especially well-suited to continuous high accuracy grinding with automated and semi-automated equipment. They are valuable in the economical management of multi-machine production facilities.

We have built a world class reputation with our clients as we have the most modern and sophisticated machinery and state-of-the-art technology. In addition, our top level professional engineers control every phase of the process of manufacturing and quality control. Yinglong(Herohome) has successfully developed abrasives which are competitive with high quality imported products, resulting in considerable foreign exchange savings for our customers. Our products are exported to Mid-Asia, Southeast-Asia etc. We hold as our motto "High standards, Excellent Customer Service" and work to achieve a mutually beneficial relationship with new & old clients around the world.



CATALOG

一、 Plain Grinding-Wheels :

1、 Centerless Plain Grinding-Wheels-----	4
2、 Plain Grinding-Wheels-----	4
2.1、 Plain Grinding-Wheels (Diameter :16mm---75mm)	
2.2、 Plain Grinding-Wheels (Diameter: 80mm---175mm)	
2.3、 Plain Grinding-Wheels (Diameter: 200mm---600mm)	
3、 Plain Grinding-wheel for Strong-Processing -----	8
4、 Plain Grinding-wheel(Single-Arc Grinding-wheel)-----	9
5、 Plain-Arc Grinding-wheel-----	9

二、 Cupulate Grinding-wheels :

1、 Cupulate Grinding-wheels-----	10
2、 One Recess Grinding-wheels-----	11

三、 Two Recess Grinding-wheels-----12

四、 Taper-cup Grinding-wheels:

1、 Taper-cup Grinding-wheels No.1 -----	13
2、 Taper-cup Grinding-wheels No.2-----	13

五、 Dished Grinding-wheel :

1、 Dished Grinding-wheel No.1 -----	14
2、 Dished Grinding-wheel No.2 -----	15
3、 Dished Grinding-wheel No.3-----	15

六、 Other Products:

1、 Tubbish Grinding wheel -----	15
2、 Grinding wheel for Glass-processing -----	16
3、 Irregular Grinding-wheels -----	18
4、 Molybdenum Powder-----	18

七、 Diamond/CBN Abrasive Paste-----17

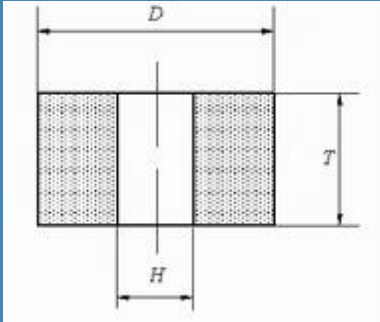
八、 Diamond/CBN Honing-sticks(stone)-----17



一、 Plain Grinding-Wheels:

(Main include : Centerless Plain Grinding-Wheels、 Plain-Arc Grinding-wheel、 Plain Grinding-wheel for Strong-Processing、 Arc Grinding-wheels etc.)

1、 Centerless Plain Grinding-Wheels



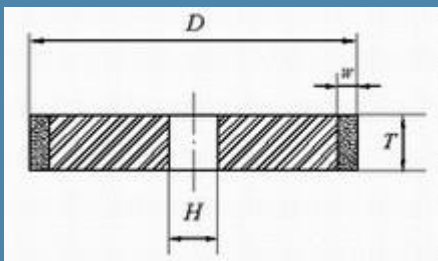
Small plain wheels
 (Small Wheels)
 Code: 1A8(PX)
 Bnder: B.M(S.Q)



Size (mm)			Diamond/CBN Content (Carat/piece)		
D	T	H	50	75	100
5	4	2	0.145	0.218	0.290
5	6	2	0.218	0.327	0.435
5	8	2	0.290	0.435	0.581
6	4	2	0.221	0.332	0.442
6	6	2	0.332	0.498	0.664
6	8	2	0.442	0.664	0.885
8	6	3	0.570	0.855	1.140
8	8	3	0.760	1.140	1.521
8	10	3	0.950	1.426	1.901
10	6	3	0.943	1.415	1.887
10	8	3	1.258	1.887	2.516
10	10	3	1.572	2.359	3.145
12	8	4	1.769	2.654	3.539
12	10	4	2.212	3.318	4.423
12	12	4	2.654	3.981	5.308
14	8	4	2.488	3.732	4.976
14	10	4	3.110	4.665	6.220
14	12	4	3.782	5.598	7.464
14	16	4	4.976	7.464	9.953

>>> Centerless Plain Grinding-wheels are used in outer-round grinding, inner-round grinding, plane grinding, centerless grinding, tool grinding, screw-thread grinding and grinder according to different patterns.

2.1、 Plain Grinding-Wheels (Diameter :16mm----75mm)



Plain Wheels
 (Plain wheels)
 Code: 1A1/T2(P)
 Binder: B.M(S.Q)

Size (mm)				Diamond/CBN Content (Carat/piece)		
D	T	H	W	50	75	100
16	8	4	2	1.55	2.32	3.10
16	10	4	2	1.94	2.90	3.87
16	16	4	2	3.10	4.64	6.19
18	8	6	2	1.77	2.65	3.54
18	10	6	2	2.21	3.32	4.42
18	16	6	2	3.54	5.31	7.08
18	20	6	2	4.42	6.64	8.85
20	4	6	3	1.41	2.12	2.82
20	6	6	3	2.12	3.17	4.23



>>> Plain Grinding-wheels are used in outer-round grinding, inner-round grinding, plane grinding, centerless grinding, tool grinding, screw-thread grinding and grinder according to different patterns. Adopted in notch and free-grinding.

>>> Plain Grinding-wheel could adopt of Outer-Rotary Grinding, Inner-Rotary Grinding, Plane-Grinding, Centerless Grinding, Tools Grinding, Screw Grinding and Grinder etc.

20	8	6	3	2.82	4.23	5.64
20	10	6	3	3.52	5.29	7.05
20	12	6	3	4.23	6.35	8.46
20	16	6	3	5.64	8.46	11.28
20	20	6	3	7.05	10.57	14.10
25	4	6	3	1.28	2.74	3.65
25	6	6	3	2.74	4.11	5.47
25	8	6	3	3.65	5.47	7.30
25	10	6	3	4.56	6.84	9.13
25	12	6	3	5.47	8.21	10.95
25	16	6	3	7.30	10.95	14.60
25	20	6	3	9.12	13.68	18.25
30	10	10	3	5.60	8.40	11.20
30	16	10	3	8.96	13.44	19.72
30	20	10	3	11.20	16.80	22.40
40	4	10	3	3.07	4.60	6.14
40	6	10	3	4.60	6.90	9.21
40	8	10	3	6.14	9.21	12.28
40	10	10	3	7.67	11.51	15.34
40	12	10	3	9.21	13.81	18.41
50	4	10	3	3.90	5.85	7.80
50	6	10	3	5.85	8.77	11.70
50	8	10	3	7.80	11.70	15.59
50	10	10	3	9.75	14.62	19.49
50	12	10	3	11.70	17.54	23.39
50	16	10	3	15.59	23.39	31.19
60	6	10	3	7.09	10.64	14.18
60	8	10	3	9.46	14.18	18.91
60	10	10	3	11.82	17.73	23.64
60	16	10	3	18.91	28.37	37.82
60	20	10	3	23.64	35.46	47.27
75	3	10; 20	3	4.48	6.72	8.96
75	4	10; 20	3	5.97	8.96	11.94
75	5	10; 20	3	7.46	11.20	14.93
75	6	10; 20	3	8.96	13.44	17.92
75	10	10; 20	3	14.93	22.39	29.86
75	12	10; 20	3	17.92	26.88	35.83

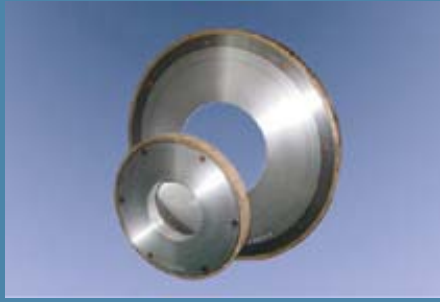
2.2、Plain Grinding-Wheels (Diameter :80mm----175mm)

Size (mm)				Diamond/CBN Content (Carat/piece)		
D	T	H	W	50	75	100
80	6	10; 20	3	9.58	14.37	19.16
80	8	10; 20	3	12.77	19.16	25.55
80	10	10; 20	3	15.97	23.95	31.93



英 隆

Yinglong Superhard Materials Manufactory
 Add: No.77, Westgate, Lintong Dist., Xi'an, China Http://www.grinding-wheel.cn
 Tel: +86-29-88490308/83851636/83855677 Fax: +86-29-88490308 83852230
 Email: info@cnherohome.com info@grinding-wheel.cn



80	16	10; 20	3	25.55	38.32	51.09
80	20	10; 20	3	31.93	47.90	63.86
100	3	20	4	7.96	11.94	15.92
100	4	20	4	10.62	15.92	21.23
100	5	20	4	13.27	19.91	26.54
100	6	20	4	15.92	23.87	31.85
100	8	20	4	21.23	31.85	42.46
100	10	20	4	26.54	39.81	53.08
100	12	20	4	31.85	47.77	63.70
100	16	20	4	42.46	63.70	84.93
100	20	20	4	53.08	79.62	106.16
125	3	32	4	10.04	15.05	20.07
125	4	32	4	13.38	20.07	26.76
125	5	32	4	16.73	25.10	33.45
125	6	32	4	20.07	30.11	40.15
125	8	32	4	26.76	40.14	53.52
125	10	32	4	33.45	50.18	66.91
125	12	32	4	40.15	60.22	80.29
125	15	32	4	50.18	75.27	100.36
125	16	32	4	53.52	80.28	107.05
125	20	32	4	66.91	100.36	133.81
150	3	32	4	12.11	18.16	24.22
150	4	32	4	16.15	24.22	32.29
150	5	32	4	20.18	30.27	40.36
150	6	32	4	24.22	36.33	48.44
150	8	32	4	32.29	48.44	64.58
150	10	32	4	40.36	60.54	80.73
150	12	32	4	48.44	72.65	96.87
150	15	32	4	60.54	90.82	121.09
150	16	32	4	64.58	96.87	129.17
150	20	32	4	80.73	121.09	161.45
175	6	32	4	28.36	42.55	56.73
175	10	32	4	47.28	70.91	94.55
175	12	32	4	56.73	85.09	113.46
175	15	32	4	70.91	106.37	141.83
175	20	32	4	94.55	141.83	189.10

2.3、Plain Grinding-Wheels (Diameter :200mm---600mm)

Size (mm)				Diamond/CBN Content (Carat/piece)		
D	T	H	W	50	75	100
200	6	32	4	32.51	48.77	65.02
200	8	32	4	43.35	65.02	86.70
200	10	32	4	54.19	81.28	108.37
200	12	32	4	65.02	97.54	130.05



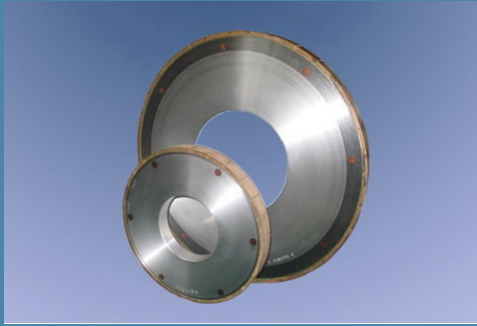
英 隆

Yinglong Superhard Materials Manufactory

Add: No.77, Westgate, Lintong Dist., Xi'an, China Http://www.grinding-wheel.cn

Tel: +86-29-88490308/83851636/83855677 Fax: +86-29-88490308 83852230

Email: info@cnherohome.com info@grinding-wheel.cn



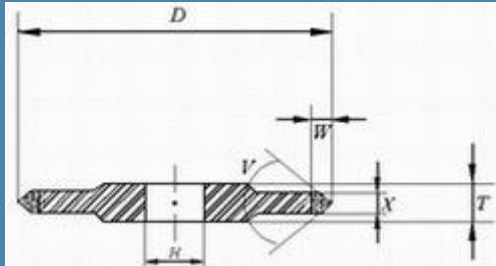
200	15	32	4	81.28	121.92	162.56
200	16	32	4	86.70	130.05	173.40
200	20	32	4	108.37	162.56	216.75
250	6	75	5	50.80	76.20	101.60
250	10	75	5	84.67	127.00	169.33
250	12	75	5	101.60	152.40	203.20
250	15	75	5	127.00	190.50	254.00
250	16	75	5	135.47	203.21	270.94
250	20	75	5	169.33	254.00	338.67
250	25	75	5	211.68	317.51	423.35
250	32	75	5	270.93	406.40	541.86
250	40	75	5	338.67	508.00	677.33
300	10	127	5	101.95	152.92	203.89
300	12	127	5	122.33	183.50	244.67
300	15	127	5	152.92	229.38	305.84
300	16	127	5	163.12	244.67	326.23
300	20	127	5	203.89	305.84	407.78
300	25	127	5	254.88	382.31	509.75
300	32	127	5	326.23	489.34	652.45
300	40	127	5	407.78	611.70	815.57
350	12	203	5	143.07	214.60	286.14
350	15	203	5	178.84	268.25	357.67
350	16	203	5	190.76	286.14	381.52
350	20	203	5	238.45	357.67	476.89
350	25	203	5	298.06	447.09	596.12
350	32	203	5	381.52	572.27	763.03
350	40	203	5	476.89	715.34	953.79
400	10	203	5	136.50	204.76	273.01
400	12	203	5	163.80	245.70	327.61
400	15	203	5	204.75	307.13	409.51
400	16	203	5	218.40	327.61	436.81
400	20	203	5	273.01	409.51	546.01
400	25	203	5	341.25	511.88	682.50
400	32	203	5	436.81	655.22	873.62
400	40	203	5	546.01	819.02	1092.03
450	12	203	6	220.95	331.42	441.89
450	15	203	6	294.60	441.89	589.19
450	20	203	6	368.25	552.37	736.49
450	40	203	6	736.49	1104.74	1472.98
500	12	203; 305	6	245.83	368.74	491.66
500	15	203; 305	6	307.29	460.93	614.57
500	20	203; 305	6	409.71	614.57	819.43
500	40	203; 305	6	819.43	1229.14	1638.86
600	12	305	10	489.34	734.00	978.67
600	15	305	10	611.67	917.50	1223.34

西安市临潼区英隆超硬材料厂 中国·西安市临潼区西关 77 号

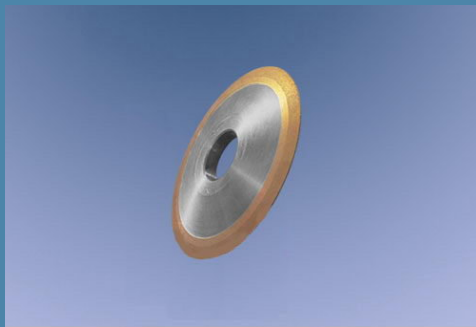
电话: +86-29-88490308/83851636/83855677 传真: +86-29-88490308/83852230 邮编: 710600

600	20	305	10	815.56	1223.34	1631.12
600	40	305	10	1631.12	2446.68	3262.24

3、 Plain wheels Rein forced (Two Taper-side Grinding-wheels)



Plain wheels Rein forced
 (Two Taper-side wheels)
 Code: 14E1(PSX)
 Binder: B.M(S.O)
 a=0.5mm



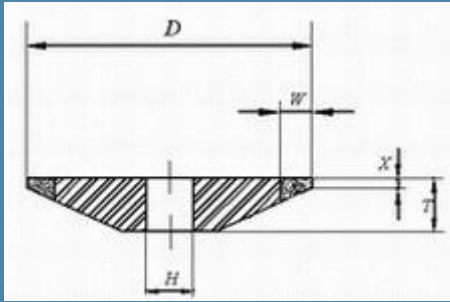
Size (mm)						Diamond/CBN Content (Carat/piece)		
D	T	H	W	X	V	50	75	100
50	5	10	6	3	40°	4.07	6.11	8.14
50	5	10	6	3	60°	4.58	6.87	9.16
60	6	10	6	3	40°	5.02	7.53	10.04
60	6	10	6	3	60°	5.63	8.45	11.26
75	6	20	6	3	40°	6.42	9.63	12.84
75	6	20	6	3	60°	7.22	10.83	14.44
100	6	20	6	3	40°	8.80	13.20	17.60
100	6	20	6	3	60°	9.86	14.79	19.72
125	6	32	6	3	40°	11.18	16.77	22.36
125	6	32	6	3	60°	12.50	18.75	25.00
150	8	32	6	3	40°	13.53	20.30	27.06
150	8	32	6	3	60°	14.81	22.22	29.62
200	10	32	8	5	40°	38.15	57.23	76.30
200	10	32	8	5	60°	41.60	62.40	83.20

>>> Double-Arc Grinding-wheel No.1 mainly adopted of gear and single-screw grinding. The Double-Arc Grinding-wheel No.2 and No.3 mainly used for Outer-Rotary and Plane grinding.

>>> Plain Grinding-wheel for Strong-Processing have many advantageous features such as high intensity of glue, firm adhesion between glue and substrates, good performance against concussion. Suit to the grinding of Crankshaft, Piston, Ceramic-Piston etc.

>>> They are widely used for the processing of refractory materials, ceramics and other rigid or hard materials with large process redundancy and inclement working condition.

4、 Plain Grinding-wheels (One Taper-side Grinding-wheels)

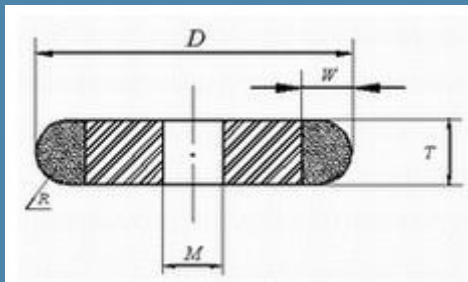


Plain wheels
 (One Taper-side wheels)
 Code:4B1(PDX)
 Binder:B.M(S.O)
 a=0.5mm

Size (mm)				Diamond/CBN Content (Carat/piece)		
D	T	H	W	50	75	100
75	6	10; 20	5	2.80	4.20	5.60
100	10	20	5	3.80	5.70	7.60
125	10	32	8	10.01	15.02	20.02
150	10	32	8	12.81	18.27	24.36

>>> Single-Arc Grinding-wheel No.1 mainly adopted of the grinding for kinds of sawtooth. Single-Arc Grinding-wheel No.2 of lower 30 degree angle, used for milling-cutter, reamer and jig grinding etc.

5、 Plain Grinding-wheels (Plain Arc Grinding-wheels)



Plain wheels
 (Plain Arc wheels)
 Code:1F1(PH)
 Binder:B.M(S.O)

Size (mm)					Diamond/CBN Content (Carat/piece)		
D	T	H	W	R	50	75	100
60	4	10	4	2	5.49	8.27	10.98
80	6	10; 20	6	3	16.31	24.47	32.63
100	8	20	8	4	36.03	54.05	72.06
150	8	32	8	4	55.79	83.69	111.60

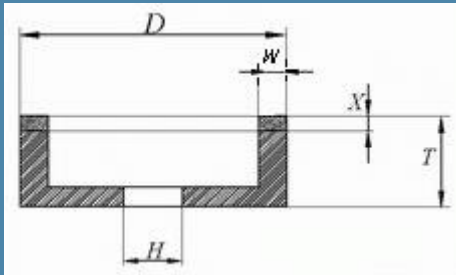
>>> Plain-Arc Grinding-wheel adopted of Drill-slot, Bearing-groove etc. with arc workpieces grinding.

>>> Grinding-wheels are manufactured into different models and patterns according to specific grindings and grinders. Ordinary Grinding-wheels include: Plain Grinding-wheel, Tubbish Grinding-wheel, Cup Grinding-wheel, Dished Grinding-wheel and Taper-cup Grinding-wheel etc.

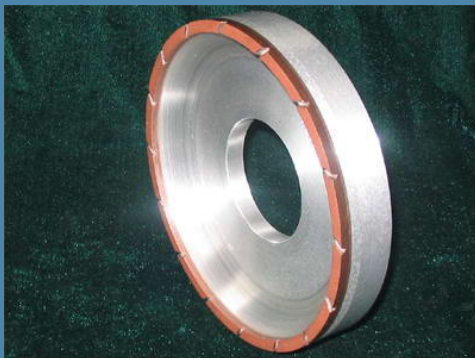
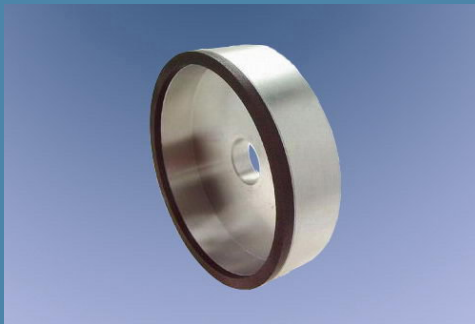


二、Cupulate Grinding-wheels:

1、Cupulate Grinding-wheels (Cupulate Grinding-wheels)

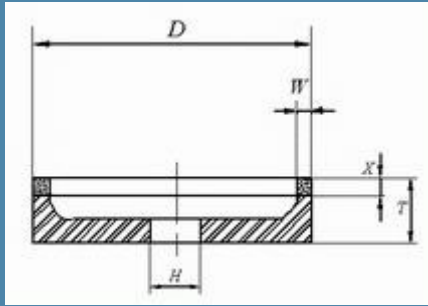


Cupulate wheels
 (Cupulate wheels)
 Code:6A2(B)
 Binder:B.M(S.Q)

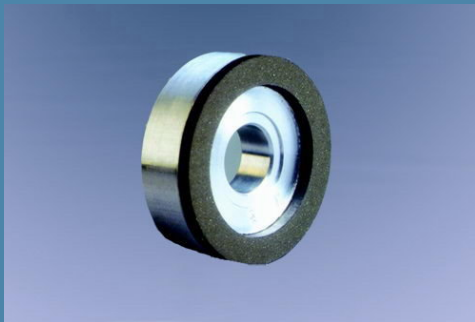


Size (mm)					Diamond/CBN Content (Carat/piece)		
D	T	H	W	X	50	75	100
50	19	10	3	2	1.95	2.92	3.90
50	20	10	3	3	2.92	4.39	5.85
50	21	10	3	4	3.90	5.85	7.80
50	23	10	3	6	5.85	8.77	11.70
50	19	10	5	2	3.11	4.67	6.22
50	20	10	5	3	4.67	7.00	9.33
50	21	10	5	4	6.22	9.33	12.44
50	23	10	5	6	9.33	14.00	18.66
75	19	10; 20	6	2	5.72	8.58	11.45
75	20	10; 20	6	3	8.58	12.88	17.17
75	21	10; 20	6	4	11.45	17.17	22.89
75	23	10; 20	6	6	17.17	25.75	34.34
80	24	20	6	2	6.14	9.21	12.27
80	25	20	6	3	9.20	13.79	18.40
80	26	20	6	4	12.27	18.41	24.54
80	28	20	6	6	18.41	27.62	36.82
100	31	20	10	2	12.44	18.66	24.88
100	32	20	10	3	18.66	27.99	37.32
100	33	20	10	4	24.88	37.32	49.76
100	35	20	10	6	37.32	55.98	74.64
125	31	32	5	2	8.29	12.44	16.59
125	32	32	5	3	12.44	18.66	24.88
125	33	32	5	4	16.59	24.88	33.18
125	35	32	5	6	24.88	37.32	49.76
125	31	32	10	2	15.90	23.85	31.79
125	32	32	10	3	23.85	35.77	47.69
125	33	32	10	4	31.79	47.69	63.59
125	35	32	10	6	47.69	71.54	95.38
150	31	32	10	2	19.35	29.03	38.70
150	32	32	10	3	29.03	43.54	58.06
150	33	32	10	4	38.70	58.06	77.41
150	35	32	10	6	58.05	87.09	116.12

2、Cupulate Grinding-wheels (One Recess Grinding-wheels)



Cupulate wheels
 (One Recess wheels)
 Code:6A2(PDA)
 Binder:B.M(S.Q)



>>> One Recess Grinding-wheel mainly adopted for Grinding-wheel to load flange of Big Diameter and thin height. The usage is the same to Plain-wheel. Single-Recess Grinding-wheel mainly for Inner-rotary and plane-grinding, relatively big diameter is used for Outer-Rotary grinding.

Size (mm)					Diamond/CBN Content (Carat/piece)		
D	T	H	W	X	50	75	100
80	12	20	6	2	6.14	9.21	12.27
80	13	20	6	3	9.20	13.79	18.40
80	14	20	6	4	12.27	18.41	24.54
80	16	20	6	6	18.41	27.62	36.82
100	15	20	10	2	12.44	18.66	24.88
100	16	20	10	3	18.66	27.99	37.32
100	17	20	10	4	24.88	37.32	49.76
100	19	20	10	6	37.32	55.98	74.64
125	15	32	10	2	15.90	23.85	31.79
125	16	32	10	3	23.85	35.77	47.69
125	17	32	10	4	31.79	47.69	63.59
125	19	32	10	6	47.69	71.54	95.38
125	15	32	15	2	22.81	34.21	45.62
125	16	32	15	3	34.21	51.32	68.42
125	17	32	15	4	45.62	68.42	91.23
125	19	32	15	6	68.42	102.64	136.85
125	15	32	20	2	29.03	43.54	58.06
125	16	32	20	3	43.54	65.31	87.09
125	17	32	20	4	58.06	87.09	161.12
125	19	32	20	6	87.09	130.63	174.17
150	15	32	10	2	19.35	29.03	38.70
150	16	32	10	3	29.03	43.54	58.06

Size (mm)					Diamond/CBN Content (Carat/piece)		
D	T	H	W	X	50	75	100
150	17	32	10	4	38.70	58.06	77.41
150	19	32	10	6	58.06	87.09	116.12
150	15	32	15	2	27.99	41.99	55.98
150	16	32	15	3	41.99	62.98	83.97
150	17	32	15	4	55.98	83.97	111.97
150	19	32	15	6	83.97	125.96	167.95
150	15	32	20	2	35.94	53.91	71.88
150	16	32	20	3	53.91	80.86	107.82
150	17	32	20	4	71.88	107.82	143.76
150	19	32	20	6	107.82	161.73	215.64
175	19	32	6	2	14.02	21.02	28.03
175	20	32	6	3	21.02	31.54	42.05
175	21	32	6	4	28.03	42.05	56.06
175	23	32	6	6	42.05	63.08	84.10



英 隆

Yinglong Superhard Materials Manufacturing

Add: No.77, Westgate, Lintong Dist., Xi'an, China Http://www.grinding-wheel.cn

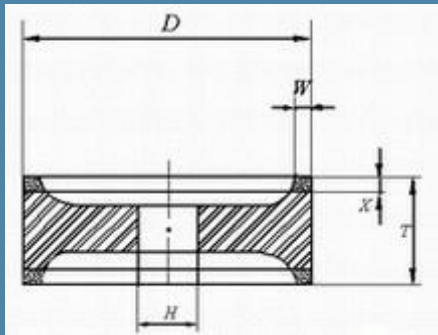
Tel: +86-29-88490308/83851636/83855677 Fax: +86-29-88490308 83852230

Email: info@cnherohome.com info@grinding-wheel.cn



175	19	32	10	2	22.81	34.21	45.62
175	20	32	10	3	34.21	51.32	68.42
175	21	32	10	4	45.62	68.42	91.23
175	23	32	10	6	68.42	102.64	136.85
175	19	32	15	2	33.18	49.76	66.35
175	20	32	15	3	49.76	74.65	99.53
175	21	32	15	4	66.35	99.53	132.70
175	23	32	15	6	99.53	149.29	199.05
175	19	32	20	2	42.85	64.28	85.70
175	20	32	20	3	64.28	96.42	128.55
175	21	32	20	4	85.70	128.55	171.41
175	23	32	20	6	128.55	192.83	257.11
200	19	32	15	2	38.34	57.54	76.72
200	20	32	15	3	57.54	86.31	115.08
200	21	32	15	4	76.72	115.08	153.44
200	23	32	15	6	115.08	172.62	230.15
200	19	32	20	2	49.76	74.65	99.53
200	20	32	20	3	74.65	111.97	149.29
200	21	32	20	4	99.53	149.29	199.06
200	23	32	20	6	149.29	223.93	298.58

三、Two Recess Grinding-wheels (Two Recess Grinding-wheels)



Two Recess Wheels
(Two Recess Wheels)
Code:9A3(PSA)
Binder:B.M(S.Q)

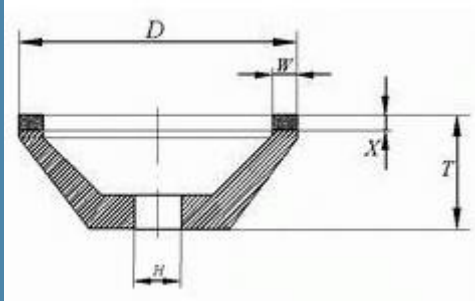
Size (mm)					Diamond/CBN Content (Carat/piece)		
D	T	H	W	X	50	75	100
100	20	20	4	3	15.92	23.89	31.85
125	20	32	4	3	20.07	30.11	40.14
150	20	32	4	3	24.22	36.33	48.44
150	20	32	8	3	47.11	70.66	94.22
150	20	32	10	3	58.06	87.08	116.11
175	20	20	4	3	28.36	48.54	56.72
175	20	20	6	3	42.05	63.07	84.10
200	20	32	6	3	48.27	72.41	96.54
200	20	32	10	3	78.79	118.19	157.58
250	25	75	8	3	80.28	120.43	160.57



>>> Two Recess Grinding-wheels mainly employed in outer-round grinding and blade-grinding, as well as the guide-wheel of centerless grinding.

四、Taper-cup Grinding-wheels:

1、Taper Cup Grinding-wheels No.1:



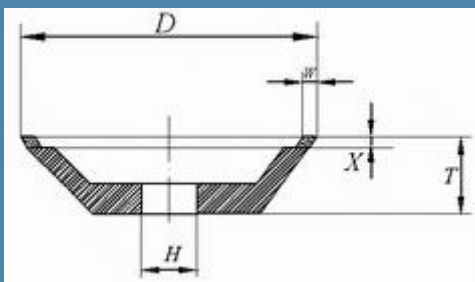
Taper Cup wheels
 Code:11A2
 Binder:B.M(S.Q)



Size (mm)					Diamond/CBN Content (Carat/piece)		
D	T	H	W	X	50	75	100
75	22	20	3	2	2.99	4.48	5.97
75	23	20	3	3	4.48	6.72	8.96
75	24	20	3	4	5.97	8.96	11.94
75	22	20	6	2	5.72	8.58	11.45
75	23	20	6	3	8.58	12.88	17.17
75	24	20	6	4	11.45	17.17	22.89
125	25	32	10	2	15.90	23.86	31.79
125	26	32	10	3	23.86	35.77	47.69
125	27	32	10	4	31.79	47.69	63.59

>>> Taper-cup Grinding-wheels are used in grind milling cutter, reamer, expanding drill, draw knife, discal lathe-tools, slotting cutter etc. Outer wall angle in 5° could grind the plane with pitch for instance lathe guide-rail, blade adapter etc.

2、Taper Cup Grinding-wheels No.2:



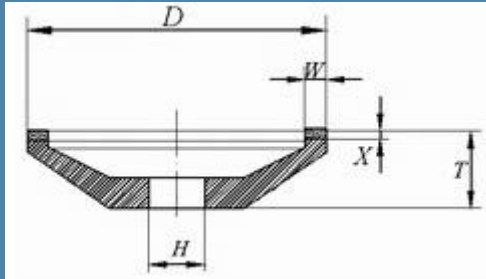
Taper Cup wheels
 (Taper Cup wheels No.2)
 Code:11V9(BW2)
 Binder:B.M(S.Q)
 a=0.5mm

Size (mm)					Diamond/CBN Content (Carat/piece)		
D	T	H	W	X	50	75	100
80	32	20	3	5	7.79	11.68	15.58
100	40	20	3.5	7	15.91	23.86	31.81
125	40	32	4	7	22.91	34.37	45.82
150	40	32	5	7	34.44	51.66	68.88

>>> The characteristic of Taper-cup wheel No.2 is: It is a line of the binding-point between Basement and Abrasive-workfield. This provides the convenience of grinding in different angles.

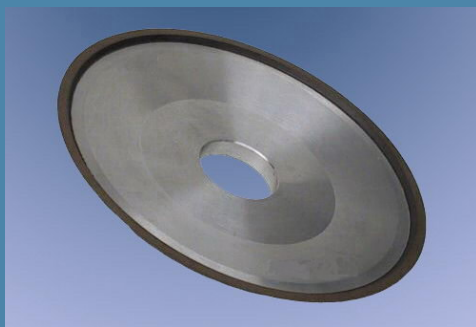
五、Dished Grinding-wheels

1、Dished Grinding-wheels No.1



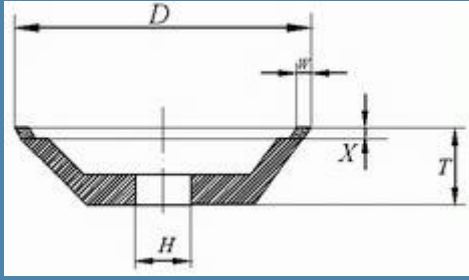
Dished wheels
 (Dished wheels No.1)
 Code:12A2/20°(D1)
 Binder: B.M(S.Q)

>>> Dished Grinding-wheel No.1 suit to grind milling cutter, rammer, draw knife and other blades.



Size (mm)					Diamond/CBN Content (Carat/piece)		
D	T	H	W	X	50	75	100
75	10	10; 20	3	2	2.99	4.48	5.97
75	11	10; 20	3	3	4.48	6.72	8.96
75	12	10; 20	3	4	5.97	8.96	11.94
75	10	10; 20	5	2	4.84	7.26	9.68
75	11	10; 20	5	3	7.26	10.89	14.52
75	12	10; 20	5	4	9.68	14.52	19.35
75	10	10; 20	6	2	5.72	8.58	11.45
75	11	10; 20	6	3	8.58	12.88	17.17
75	12	10; 20	6	4	11.45	17.17	22.89
80	13	20	3	3	4.79	7.18	9.58
100	12	20	3	2	4.02	6.03	8.05
100	13	20	3	3	6.03	9.05	12.07
100	14	20	3	4	8.05	12.07	16.09
100	12	20	5	2	6.57	9.85	13.13
100	13	20	5	3	9.85	14.77	19.70
100	14	20	5	4	13.13	19.70	26.27
100	12	20; 10	10	2	12.44	18.66	24.88
100	13	20; 10	10	3	18.66	28.00	37.32
100	14	32	10	4	24.88	37.32	49.76
125	12	32	5	2	8.29	12.44	16.59
125	13	32	5	3	12.44	18.66	24.88
125	14	32	5	4	16.59	24.88	33.18
125	16	32	10	2	15.90	23.85	31.79
125	17	32	10	3	23.85	35.77	47.69
125	18	32	10	4	31.79	47.69	63.59
150	15	32	5	2	10.02	15.03	20.04
150	16	32	5	3	15.03	22.55	30.07
150	17	32	5	4	20.04	30.07	40.09
150	15	32	10	2	19.35	29.03	38.70
150	16	32	10	3	29.03	43.54	58.06
150	17	32	10	4	38.70	58.06	77.41
175	20	32	6	2	14.02	21.02	28.03
175	21	32	6	3	21.02	31.54	42.05
175	22	32	6	4	28.03	42.05	56.06
175	20	32	10	2	22.81	34.21	45.62
175	21	32	10	3	34.21	51.32	68.42
175	22	32	10	4	45.62	68.42	91.23

2、Dished Grinding-wheels No.2



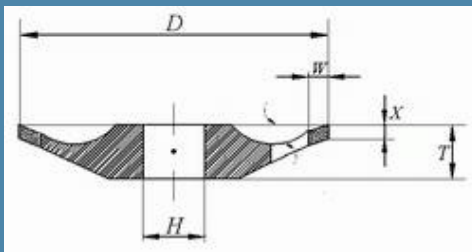
Dished wheels
 (Dished wheels No.2)
 Code:12V2/(D2)
 Binder:B.M(S.Q)
 a=0.5mm



Size (mm)					Diamond/CBN Content (Carat/piece)		
D	T	H	W	X	50	75	100
80	13	20	3	3	4.62	6.97	9.24
100	13	20	3	3	5.85	8.77	11.69
125	16	32	5	3	12.13	18.19	24.26
150	16	32	5	3	14.72	22.08	29.44

>>> Dished Grinding-wheel No.2 could grind involute gear, milling cutter etc.

3、Dished Grinding-wheels No.3



Dished Grinding-wheels No.3

>>> The wheels are specially made for all kinds of jig grinder, tool grinder and complicated cutters. They are mainly used for the processing of all specifications of high-speed steel, hard-alloy rotary file, technical drill, and dentistry drill, milling cutter, stones and ceramic products. Wheel of every size and specification can be manufactured based on the actual condition of equipments and detailed requirements of clients.

六、Other Shape Grinding-wheels

1. Tubbish Grinding wheel



>>> Tubbish Grinding wheel ordinarily used in arising plane-grinder, ceramic grinding, glass grinding, blade grinding, milling cutter, reamer, expanding drill, draw knife, discal lathe-tools, slotting cutter etc.



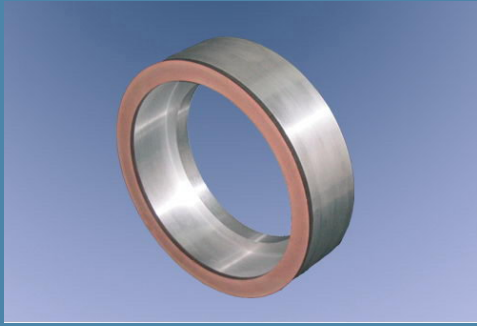
英 隆

Yinglong Superhard Materials Manufactory

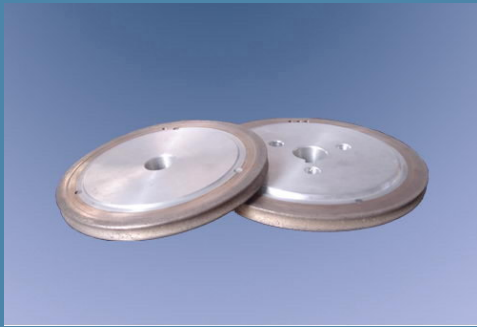
Add: No.77, Westgate, Lintong Dist., Xi'an, China Http://www.grinding-wheel.cn

Tel: +86-29-88490308/83851636/83855677 Fax: +86-29-88490308 83852230

Email: info@cnherohome.com info@grinding-wheel.cn



2、 Grinding wheel for Glass-processing



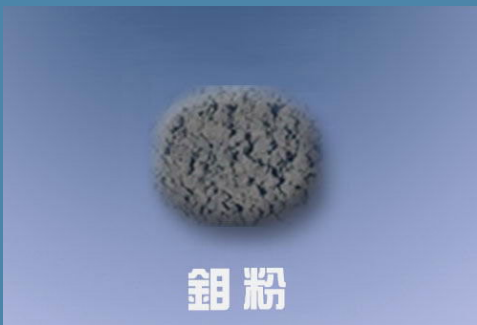
>>> Grinding wheel for Glass-processing widely employed in every grinding-requirement in the field of Glass-processing. We could provide different kinds of patterns and models according to the requirements of our customers.

3、 Irregular Grinding-wheels



>>> Every model, pattern and drawing could be made according to the specific requirements and the actual situation of the device of our customers.

4、 Molybdenum Powder



钼粉

>>> Appearance: Pure Gray Metallic-Powder.
>>> Usage: Used for the materials of molybdenum and molybdenum-alloy products. For instance Huge molybdenum-billet; Silicon molybdenum capacitor; Controllable silicon roundpiece; Molybdenum thumbstall etc. Including the spray molybdenum adopted in the surface-spraying for automobile gear, piston ring, clutch etc. of wearable workpieces. It also could collaborate with other spray-materials.
>>> Brand: Yinglong FMo-1, FMo-2
>>> Majoy content: FMo-1 Mo \geq 99.9% (Count by minus-method); FMo-2 Mo \geq 99% (Count by minus-method)
>>> Loose density: (0.95-1.2)g/cm³

七、Diamond/CBN Abrasive Paste



I、Varieties and Applying fields:

Grease-mixed mainly employed in the manufacturing of high-hardness materials for instance burden machine grinding, polishing sintered-carbide, alloyed steel, high carbon steel etc.

Water-mixed mainly employed in the finish lapping of the samples of metallic phase & lithofacies etc.

II、Characteristics:

Diamond/CBN Abrasive-paste is produced fine and confect by the diamond/CBN micrones and other raw-materials, it is a relevant ideal Abrasive-paste for grinding and polishing with well lubrication and cooling capability, the hardness of diamond granule is high with equal granularity, and excellent grinding effects.

III、Applying fields:

Our products suit to process measures, blade-tools, optics appliances and other high glabrous workpieces by the high-hardness materials for instance glass, ceram, sintered-carbide, natural stone, bijou etc.

IV、Selection of Abrasive paste:

It mainly decided by the requirement of glabrous workpieces and efficiency with original glabrous of workpieces

八、Diamond/CBN Honing-sticks(stone)



>>> Synthetic Diamond & CBN Honing stick is a kind of renewing product extensively applied in machine-making industries such as cylinder, oil cylinder and precision inner circle processing.

>>> Featuring high efficiency, long-life and superior precision of processing, they have gradually replaced the traditional silicon carbide honing sticks. With much longer life than traditional grinding tools by 500 times, higher working efficiency that improved at twice, and better brightness improved about 2—3grades, they are really the ideal choice for honing technique.



>>> After years of exploration and research, we have developed "Yinglong" honing sticks series. They adopt advanced formula, unique producing techniques, which make them more stable, more effective and more durable to abrasion. Approved by a lot of famous enterprises of China, the quality and technical parameters have reached the standard of the similar imported products. The experts and leaders of National Association of gas engine also have set high value on the product series.

>>> Diamond/CBN Honing-stone loaded with honing-machine. Widely adopt in processing Black-metal, High-speed steel, Stainless steel, Alnico, Chrome and Ilmenite etc. Improve the process efficiency and process precision as well as low comprehensive costs. Our models include 50mm, 75mm, 100mm, 125mm, 150mm etc. Mainly adopted in the field of Moulding, Compressor, Automobile Components and Sartorius manufacture etc.

Contact:

Yinglong(Herohome) Superhard Materials Manufactory

Add: No.77, Westgate, Lintong District, Xi'an, China

Fax: +86-29-88490308 83852230

Email Us:

General Office:

Phone: +86-29-83855677

Email--- Info@cnherohome.com

Commercial Department:

Phone: +86-29-88490308

Email--- Sales@cnherohome.com

Export Department:

Phone: +86-29-88490308

Email--- Export@cnherohome.com

Technical Department:

Phone: +86-29-83855677

Email--- Koloya@cnherohome.com

We sincerely welcome you to built our long relationship !